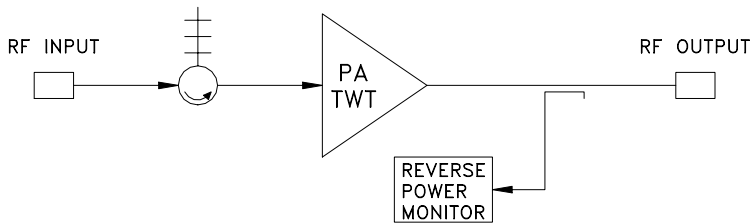


Model 467K and Ka Pulse/CW TWT Amplifier



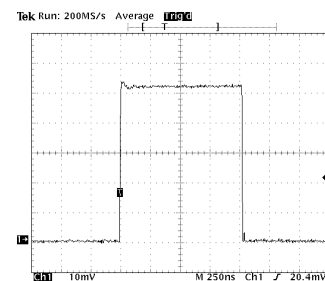
The Model 467K and 467Ka are dual mode Pulse/CW TWT Amplifiers which have been designed to operate TWT's in the 125 watt power range for frequencies of 18 to 26.5 and 26.5 to 40 GHz. The RF output pulse is generated by the focus electrode (grid) pulse without the use of RF switches. RF output pulse is controlled by the input video pulse.

Internal power supplies are DC-DC converter designs with fast loop response times so that output level variations are minimal for any PRF including a non-periodic or burst type PRF. The modular power supplies and grid pulse generator have very low ripple, with attendant low phase noise in the TWT Amplifier.

The modular design of the Model 467 provides convenient accessibility to all elements in the TWT amplifier. Plug-in PC boards are accessible through the front panel. The PC card cover contains a legend for PC card located test points and controls. High voltage modules are encapsulated, plug-in assemblies. There is no exposed high voltage. Modules are interchangeable between all units regardless of frequency.

FEATURES:

- Frequency 18-40 GHz
Octave / Multioctave
- Low Spurious Outputs
- Phase and Amplitude Stability
- RF Output Fidelity
- Complete TWT Protection
 - PRF Limit
 - Helix Overcurrent
 - Cathode Over/Undervoltage
 - Filament Low Voltage
 - Overtemperature
 - Input Energy Limit
 - Reverse Power Monitor
- Custom Requirements
- Solid State Except for the TWT
- Front Panel Voltage Adjustments
- Front Panel Fault Isolation
- Modular Construction
- DC TWT Filaments
- Four Line Display
 - Operating Mode
 - Cathode Voltage
 - Helix Current
 - Filament and Operate Time
- Front Panel Controls
 - Power On / Off
 - Operate
 - Standby
 - Fault Reset
 - Local / Remote
 - Pulse / CW

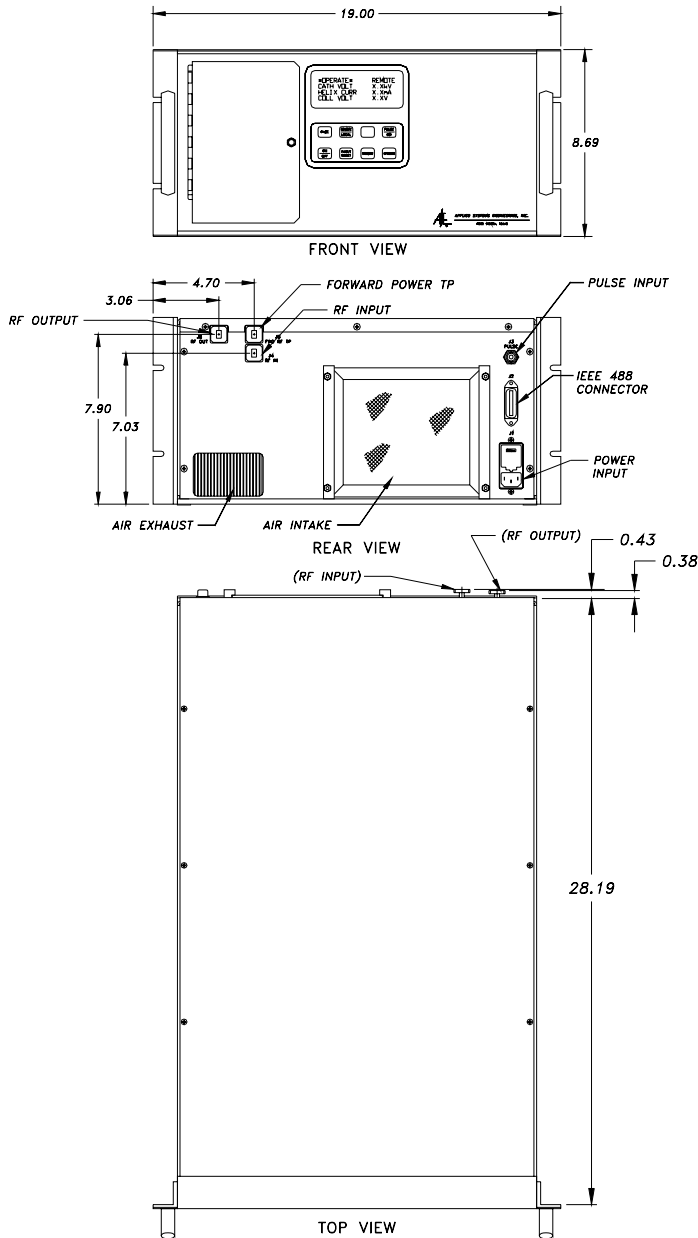


Detected RF Output

Model 467K/Ka TWT Amplifier

SPECIFICATIONS

Duty Cycle	Up to 50% Pulse or CW
Pulse Width Range	50 ns to CW
PRF Range	100 kHz
RF Rise / Fall Time	15 ns, Maximum
RF Pulse Droop	< 0.1 dB, Maximum
Delay, Input to RF	200 ns, Maximum
Phase Noise	< $\pm 1^\circ$ pk to pk
Amplitude Variation	0.1 dB, Maximum
Spurious Outputs	-50 dBc, Maximum
Input Pulse	5 Volts into 50 ohms
Noise Figure	35 dB, Nominal
RF Connectors	K type/Waveguide
Primary Power	120/220/240 VAC $\pm 10\%$, 50/60 Hz
Operating Temperature	0 to 50°C
Weight	90 lbs, Nominal
Dimensions	8.75x19x28.5 (in.)



Standard Equipment

- Input Isolator
- Filament / Operate Time
- IEEE-488 Remote Interface
- Reverse Power Monitor
- Switchable Pulse or CW Mode of Operation

Options

- Driver Amplifier
- Other PRF and Pulse Width Ranges
- RF Sample Ports
- RS-232/422 Remote Interface
- Other Primary Power
- Outdoor Enclosure



APPLIED SYSTEMS ENGINEERING, INC.

PO BOX 122987 FORT WORTH, TEXAS 76121
TELEPHONE: (817) 249-4180 FAX: (817) 249-3413

mdl467k_1.wpd
01-05-07